



promoted by
MARRELLIHEALTH

HEALTH CARE SERVICE CHARTER

HEALTH CARE SERVICE

FIVE-STAR HEALTH CARE accessible to everyone

Dear Patient,

The entire team at MARRELLI HOSPITAL welcomes you. This service charter is aimed at safeguarding users' rights and serves as a representative document of a dynamic process that will develop and be adapted over time. It is subject to constant evaluation, improvement, and integration, in accordance with the principles that inspire and guide our work.

It is an important tool that allows patients to verify how the services offered are used, the quality standards guaranteed, and the completeness of the information provided.


This document also outlines the internal hospital bodies dedicated to patient protection and the procedures for filing complaints about actions or behavior that could deny or limit citizens' access to health care services. Thus, it ensures transparency and efficacy in diagnostic and therapeutic activities.

We kindly ask our patients to cooperate by filling out the questionnaires we provide; this helps us—together with doctors, nurses, support staff, and administrative personnel—to deliver "humanized medicine," the product of numerous coordinated clinical and administrative efforts.

Marrelli Hospital is at the forefront in terms of quality. Our corporate philosophy regards clinical-scientific research and professional training as fundamental elements for the continuous improvement of the services provided, aiming for qualitative excellence. Equally fundamental is listening to and respecting the patient, firmly believing that beyond medical and scientific competence, our responsibility toward patients and their families also involves dialogue, a relationship based on trust, and accompanying the individual along their therapeutic path.

THE MEDICAL DIRECTOR
Dr. Massimiliano AMANTEA



A middle-aged man with a receding hairline is smiling at the camera. He is wearing a white lab coat over a blue and white striped shirt. His arms are crossed over his chest. The background is a bright, slightly out-of-focus indoor space with warm lighting and some architectural details.

“ ...un Vincitore
è un Sognatore
che non si è mai arreso! ”

Memorabilia

TABLE OF CONTENTS

- 1 FUNDAMENTAL PRINCIPLES AND MISSION
- 2 THE FACILITY
- 3 PREVENTION AND DIAGNOSIS
- 4 SPECIALIST OUTPATIENT CLINIC
- 5 GROWTH MILESTONES
- 6 ADMISSIONS AND HOSPITAL STAYS
- 7 SURGICAL AREA
- 8 CLINICAL AREA
- 9 INTENSIVE CARE, ANESTHESIA, AND RESUSCITATION
- 10 WOMEN'S WORLD ("PIANETA DONNA")
- 11 PAIN THERAPY
- 12 CHECK-UP
- 13 RADIOLOGY
- 14 RADIOTHERAPY
- 15 RESEARCH ACTIVITIES
- 16 THE QUALITY SYSTEM
- 17 USEFUL INFORMATION
- 18 HOW TO REACH US
- 19 MARRELLI HOME
- 20 CONVENTIONS AND INSURANCE
- 21 OTHER SERVICES





1. Fundamental Principles and Mission

MARRELLI HOSPITAL is a privately run, SSN-accredited, multi-specialty medical-surgical clinic that provides oncological, general, orthopedic, and pediatric orthopedic surgeries. It is the latest facility established by the Marrelli Group, conceptualized and built by Dr. Massimo Marrelli as a center of excellence offering prevention, diagnosis, and treatment services aligned with the highest quality standards.

MARRELLI HOSPITAL distinguishes itself through therapeutic innovation, the development of personalized medicine, and the quality and safety of care, always placing the patient at the center of its mission.

Not only does it stand out in the healthcare landscape for the competence and professionalism of its staff and for its sophisticated, cutting-edge equipment, but also for its overall patient comfort. This is thanks in part to advanced healthcare architectural standards guiding the transformation of an existing structure that includes various ancillary services for patients and their families.

The hospital aims to provide diagnostic and treatment services—both inpatient and outpatient—for adult and pediatric patients, promote research and teaching, and ensure the shortest possible waiting times. It does so in compliance with fundamental principles: equality, impartiality, continuity, right of choice, and participation.

Equality: The relationship between MARRELLI HOSPITAL and its patients is based on uniform rules, and services are delivered in full recognition of genuine equality, regardless of gender, race, culture, economic status, age, language, nationality, religion, or political opinion.

Impartiality: All medical and other staff at MARRELLI HOSPITAL adhere to principles of objectivity, fairness, justice, and impartiality in treating each patient.

Continuity: Services are provided regularly and continuously without interruption. The doctors and staff at MARRELLI HOSPITAL undertake any necessary steps to minimize patient inconvenience, even in cases where irregularities or interruptions in service occur due to force majeure.

Right of Choice: Each patient, in accordance with staff availability and facility organization, may choose their preferred provider for the needed services and therapies.

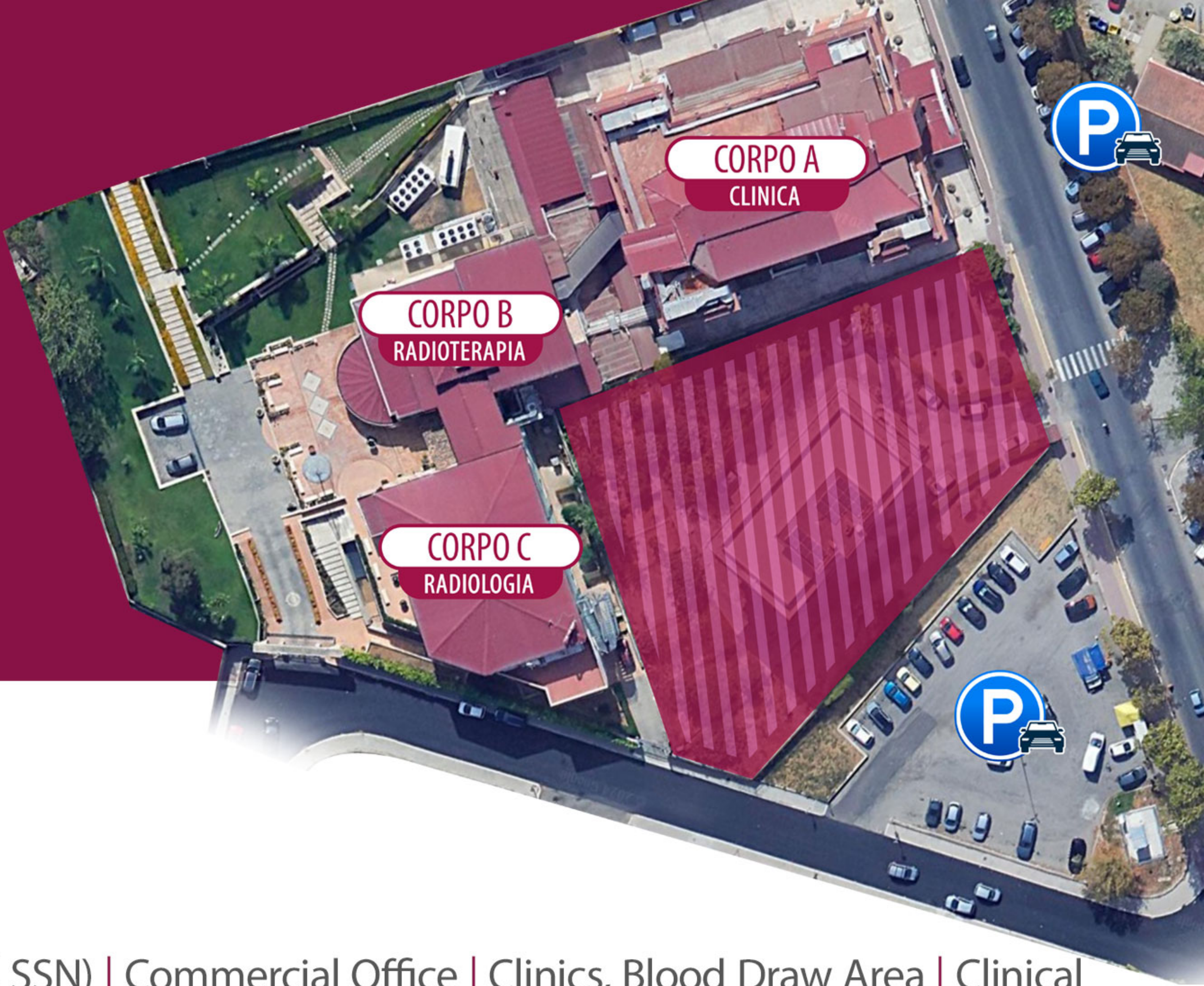
Participation: MARRELLI HOSPITAL ensures each patient can collaborate by providing feedback and suggestions to help maintain the quality of care and improve services.

Efficiency and Effectiveness: MARRELLI HOSPITAL continuously strives to enhance quality and efficiency in service delivery by adopting every measure to achieve these goals, particularly focusing on the selection, training, and continuous professional development of its staff.

2. THE FACILITY

MARRELLI HOSPITAL is located in Crotona on Via Gioacchino da Fiore, in the central part of the city, easily accessible.

It spans approximately 5,500 square meters, comprising two buildings. The main building is a single block with five above-ground floors:



Clinica CORPO A

FLOOR	0	Patient Admissions (Self-Paying and SSN) Commercial Office Clinics, Blood Draw Area Clinical Laboratory Pre-hospitalization Area Central Booking (CUP) Waiting Rooms Bar/Cafeteria, Chapel Luggage Storage Gurney/Patient Entrance.
FLOOR	1	Operating Block Endoscopy Intensive Care Pharmacy Sterilization Unit Recovery Room.
FLOOR	2	General Surgery and ENT Wards Tunnel connecting to the second building.
FLOOR	3	Orthopedic and Pediatric Orthopedic Ward Day Surgery Room.
FLOOR	4	Administrative Offices Medical Directorate, Presidency Rehabilitation Room Clinics for Aesthetic Medicine and Dermatology.

The kitchen is located in the secondary building, positioned at the back of the main structure. This same area houses changing rooms, storage rooms, and the morgue.

Beds: 60 total, as follows:



General Surgery



Orthopedics and Pediatric Orthopedics



Otorhinolaryngology

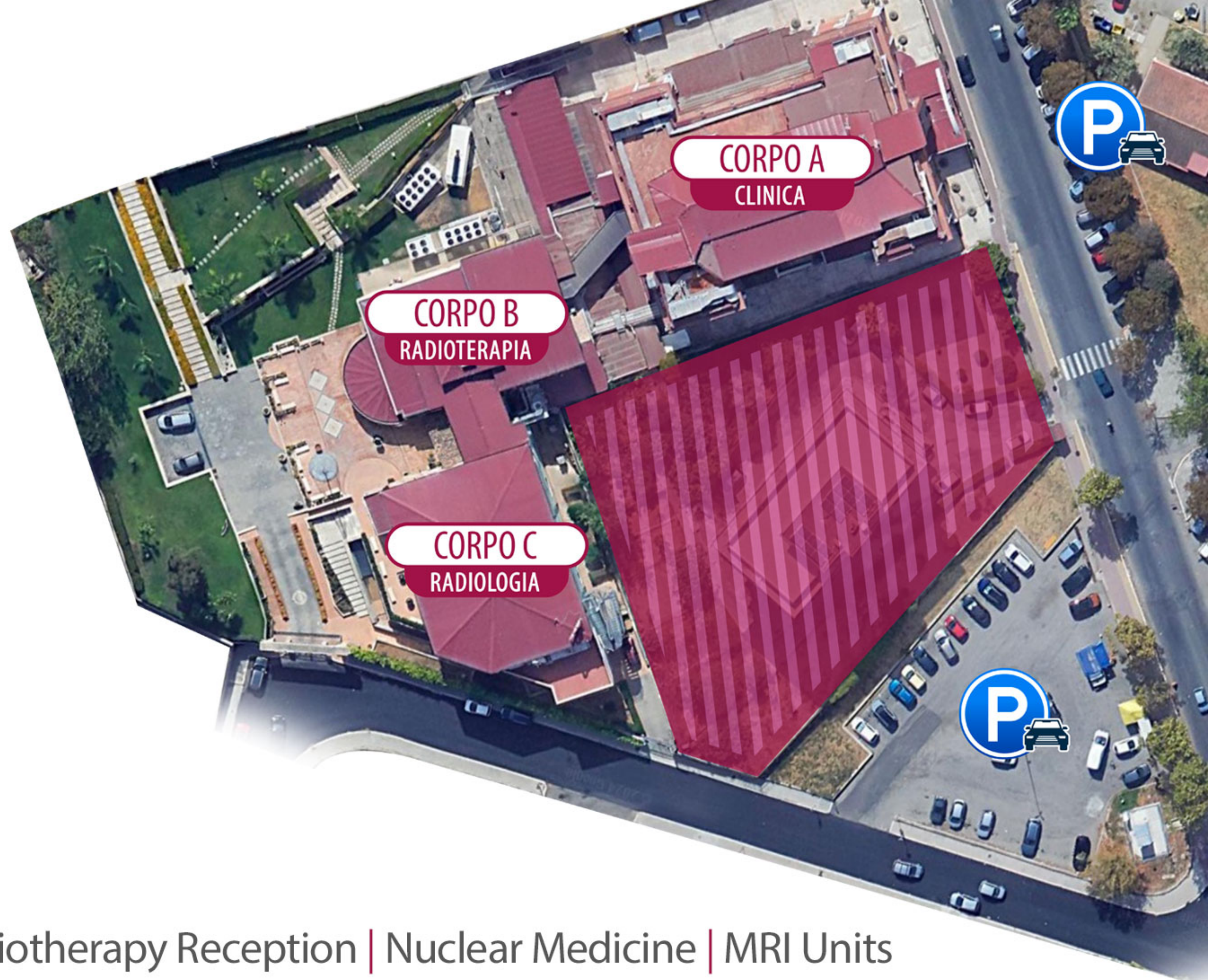


Intensive Care

in 2015

the facility underwent expansion with the addition of another building, connected to the existing one, dedicated to diagnostic imaging, nuclear medicine, and radiotherapy

Radioterapia CORPO B Radiologia CORPO C



FLOOR
-1

Radiotherapy Unit | TPS Room | Radiotherapy Reception | Nuclear Medicine | MRI Units
Social Worker's Office | Waiting Rooms.

FLOOR
0

Radiology Reception | Waiting Rooms | Report Collection | Clinics | CT Room | X-ray Room
Ultrasound Clinics | Mammography Room | DEXA Bone Densitometry Room | Reporting Room.

FLOOR
1

Ophthalmology Reception | Ophthalmology Clinics | Ophthalmic Operating Room | Waiting Room
Hybrid Room for Interventional Radiology | Changing Rooms | Conference Room.



Operating Block

The operating block has four operating rooms, one room for pre-anesthesia and patient recovery, with capacity for up to five patients.

It was designed with high-quality standards, fully compliant with the most recent safety regulations. Each operating room measures more than 36 square meters—an essential requirement for highly specialized surgery—and includes a sophisticated air-conditioning system that allows 20 to 50 air exchanges per hour.

A computerized control system provides real-time indicators on barometric pressure, temperature, air flow, and particulate levels, all aimed at maintaining the highest level of sterility. Each operating room has its own column for video surgery, enabling laparoscopic and gastrointestinal endoscopic surgeries, as well as arthroscopic surgeries.



Hospital Stays

There are 29 patient rooms, accommodating a total of 72 beds, of which 60 are accredited by the SSN and 12 are for private care.

The private rooms offer greater hotel-like comfort, including a minibar and wireless internet access. Each room meets current healthcare regulations, featuring natural light from windows or balconies, private bathroom facilities, air conditioning, and a TV for each bed. Beds come with overhead panels for day and night lighting, medical gases, and a nurse call system linked to the nurses' station.

Each room also includes CEI-compliant electrical outlets. Special attention has been given to the furnishings to create a welcoming, home-like environment for patients and any companions.



3. Prevention and Diagnosis

MARRELLI HOSPITAL's strength lies in its approach, which involves professionals from various disciplines (physicians, nurses, technicians, therapists, etc.) working together to care for the patient. This ensures comprehensive patient management, with professionals from all specialization areas exchanging knowledge to achieve the most accurate and sophisticated diagnosis, guiding optimal therapeutic choices. A modern facility, highly qualified staff, cutting-edge technology, and the pursuit of continuous improvement distinguish the quality of our care.



4. Specialist Outpatient Clinic

MARRELLI HOSPITAL offers the opportunity to book health services by phone, WhatsApp, social media channels, and email.

The active specialties are:

- ALLERGOLOGY
- CHEMICAL AND MICROBIOLOGICAL ANALYSES
- ANGIOLOGY AND VASCULAR SURGERY
- CARDIOLOGY
- OUTPATIENT SURGERY
- DIGESTIVE SURGERY
- HEPATO-BILIARY-PANCREATIC SURGERY
- GENERAL AND ONCOLOGICAL SURGERY
- PEDIATRIC SURGERY
- PLASTIC AND RECONSTRUCTIVE SURGERY
- PROCTOLOGICAL SURGERY
- DERMATOLOGY
- ULTRASOUND DIAGNOSTICS
- DIETETICS
- ENDOCRINE SURGERY
- ENDOCRINOLOGY AND DIABETOLOGY
- DIGESTIVE ENDOSCOPY
- GASTROENTEROLOGY
- GYNECOLOGY
- AESTHETIC MEDICINE
- INTERNAL MEDICINE
- NEUROSURGERY
- NEUROLOGY
- OPHTHALMOLOGY
- ORTHOPEDICS AND TRAUMATOLOGY
- PEDIATRIC ORTHOPEDICS
- OTORHINOLARYNGOLOGY
- PNEUMOLOGY
- PSYCHOLOGY
- RADIOOTHERAPY
- RHEUMATOLOGY
- SENOLOGY (BREAST DISEASES)
- PAIN THERAPY
- UROLOGY

5. Growth Milestones



2013/2016

These were significant years for Massimo Marrelli and for healthcare in the Crotona area. On November 9, 2013, Marrelli Hospital was officially inaugurated, a healthcare facility dedicated to oncological surgery and orthopedics.

Before an audience of institutional authorities, academics, physicians, and journalists from across Calabria, Marrelli introduced a facility that, in his words, would mark an important milestone for healthcare in Calabria, born with the aim of curbing medical migration out of the region.

Three years later, on June 4, 2016, Marrelli realized a modern concept of a hospital in which diagnostic and treatment activities are kept separate for enhanced efficiency and an improved patient experience. It was a day celebrating medicine and technological innovation, attended by prominent healthcare professionals from across Italy. The new Marrelli Hospital Radiology department was opened; it soon became a reference center for diagnostic imaging in Calabria.

This brand-new wing of the facility was equipped with the best technologies on the market for patient diagnosis and treatment.

The new wing spans a total area of 7,500 square meters and boasts an angiographic room, a hybrid room with a 3D robot—the first of its kind in Calabria—two CT scanners, two gamma cameras, two MRI machines (one open and one closed, to meet every patient's needs), a 3D mammography unit, a PET scanner, as well as DEXA, X-ray, and OPT.



2018/2022

Another pivotal and unforgettable year for the Marrelli Group—and especially for healthcare in Crotona—was 2018.

On June 22, 2018, the first High-Tech Radiotherapy Center in Crotona officially opened at Marrelli Hospital. Another section of the facility was entirely dedicated to cancer patients—the dream of one man that evolved into the dream of a whole community.

Massimo Marrelli organized a grand event in the style he preferred, calling it “Hopera” (with an ‘h’ referring to the English term “hope”).

Marrelli did not stop there; even before the new center was accredited by the SSN (the Italian National Health Service), it was already offering free cancer treatments to patients.

Later accredited by the SSN, it has become a regional point of reference for oncology patients and offers highly innovative radiotherapy treatments (IMRT, VMAT, IGRT, Adaptive RT, SRS, SBRT) using one of the most advanced linear accelerators currently on the market, the Elekta Versa HD with an Agility MLC. This equipment is capable of delivering high doses of radiation in short time spans, limiting side effects. Radiotherapy techniques allow for the treatment of primary and metastatic or recurrent tumors, offering a valid alternative to surgery.

Thanks to its strong focus on innovation, the center quickly established a network of collaborations with institutions such as Humanitas, Policlinico Gemelli, Fatebenefratelli (San Pietro), and Neuromed.

Several years later, in 2022, the center expanded further. In the additional bunker that had already been built, a new accelerator identical to the existing one was installed, enabling more simultaneous treatments for a greater number of patients.



6. Admissions and Hospital Stays

Scheduled Ordinary Admission

MARRELLI HOSPITAL provides services under Scheduled Ordinary Admission or Day Surgery. These admissions typically involve non-urgent conditions.

There are two types:

- a) Ordinary in-hospital stay:** A scheduled admission for major surgeries requiring at least 48 hours of post-operative observation.
- b) Day Surgery:** A scheduled admission for minor surgery taking fewer than 24 hours; overnight stay is not expected unless needed.

Admission Procedures

Ordinary and Day Surgery admissions require a pre-admission phase, which varies based on the type of scheduled surgery and the specialist's evaluation.

Scheduling is based on bed availability or priority class assigned to patients.

The ward's head nurse will notify the patient of the admission date, arranged in cooperation with MARRELLI HOSPITAL specialists. On the admission day, admissions staff will manage all administrative procedures.

Documents Required for Admission

On the indicated date and time, the patient must report to the admissions office with:

- **Medical request issued by the patient's primary care physician, according to facility guidelines.**
- **Health insurance card**
- **Valid form of ID**
- **Any prior test results or medical records from previous admissions**

It is essential to present documentation relating to all tests performed, as well as hospitalization records from previous admissions. It is also vital to inform physicians about any medications being taken at home, for continuity of treatment during the stay.

Day Surgery Admission

Day Surgery is a form of admission allowing surgeries or other invasive/semi-invasive procedures to be performed on the same day, under local, regional, or general anesthesia. It includes minor procedures after which the patient can be discharged a few hours later.

The Day Surgery admission is determined by the surgeon following a thorough outpatient evaluation and requires pre-operative tests and post-operative check-ups. The patient is informed about the procedure type, potential risks, and possible complications.

The procedure is then scheduled according to a waiting list based on clinical and chronological criteria.



Arrival on the Ward

After completing admission formalities, the patient is escorted to the ward, where the head nurse assigns the room and bed and provides all relevant information for the hospital stay.

What to Bring

- Pajamas or nightgown, slippers, socks, bathrobe or dressing gown, underwear, personal items, any necessary prosthetic care items, and any ongoing medication (along with dosage).
- All relevant documentation of previous tests or admissions.
- It is essential to inform staff about any medications taken at home for continued treatment during the stay.

What Not to Bring

Do not bring valuables. MARRELLI HOSPITAL is not responsible for loss or theft of personal items or money.

Information and Privacy

Upon admission, as stipulated by Legislative Decree 196/2003 ("Personal Data Protection Code"), each patient receives information on how their personal data will be processed. During admission, patients are asked to:

- Sign consent for data processing.
- Specify whether and to whom information regarding their health status may be communicated.

Medical staff cannot share patient information with third parties without the patient's consent. All staff members adhere to an internal privacy procedure, monitored throughout the year via specialized audits. The right to access one's personal data is guaranteed as per law (Article 7 of Legislative Decree 196/03) and can be exercised at the company's complaints office, along with any service-related complaints. Feedback from patients is a valuable tool for MARRELLI HOSPITAL to improve service quality and data protection standards.

Right to Information and Informed Consent

The patient has the right to be clearly, comprehensively, and fully informed about the health treatment they will undergo and any possible therapeutic alternatives.

Physicians are required to thoroughly and clearly explain the nature and course of the treatment, allowing patients to decide whether or not to proceed.

For all invasive procedures, patients must be given an Informed Consent Form, which they sign to indicate awareness of the tests and treatments being performed. The physician providing the information also signs the form, ensuring written proof—valid in case of any disputes.

Issuing Clinical Documentation

• ADMINISTRATIVE CERTIFICATION OF ADMISSION

During the hospital stay, you may request a certificate of admission (without a diagnosis) for your employer, insurance, etc.

• Healthcare Documentation

To obtain a copy of your medical chart or other relevant healthcare records upon discharge, you (or an authorized person) must submit a request (along with a copy of a valid ID, the name of the ward, and admission dates) to the CUP office.

Collection is possible within the timeframe established by the Gelli-Bianco Law and, in any case, within 30 days from receipt of the request.

Discharge

When it is time for discharge, a letter is provided with detailed information regarding the final diagnosis, the treatments performed, and recommended follow-up care. Upon leaving, patients can request a copy of their clinical documentation (medical chart, radiological exams, etc.) and, if needed, schedule follow-up visits through the CUP service. During follow-up appointments, patients must bring their discharge letter.



Daily Timetable

Dear Guest, we wish to outline the typical daily routine during a hospital stay in our wards. You may find references to specific activities related to certain pathologies that may not necessarily apply to your stay or therapeutic plan. For further details, please speak with the head nurse. Upon arrival, the head nurse will accompany you to your room. During the day, nursing staff will visit regularly to monitor your condition.

Times for diagnostic tests or physiotherapy sessions will be communicated in advance. For any scheduled surgery, relevant instructions will be given directly by the ward physician. One of our team doctors will check on you daily, but we cannot provide an exact schedule. Should you wish to communicate with your personal physician, ward nursing staff will be available to assist. A duty physician is present 24/7. The facility also maintains on-call cardiology, radiology, and anesthesiology services, and a clinical testing laboratory.

The operating room is active from 7:00 a.m. to 8:00 p.m. on weekdays and from 7:00 a.m. to 2:00 p.m. on Saturdays. In case of emergencies, there is on-call nursing (and anesthesiology) for the operating room and intensive care.

Daily Inpatient Schedule

6:30 – 7:00 a.m. | Nursing Activities

- BLOOD DRAWS FOR DIAGNOSTIC TESTS
- MONITORING OF DRAIN AND URINARY CATHETER LEVELS
- CHECKING VITAL SIGNS AND ADMINISTERING THERAPY

7:00 – 7:30 a.m. | Breakfast Service

8:00 – 12:00 p.m. | Hygiene, Sanification and Checking

- PERSONAL HYGIENE AND BED-MAKING
- CLEANING AND SANITIZING ROOM AND RESTROOM
- CHECKING VITAL SIGNS AND ADMINISTERING THERAPY
- DIAGNOSTIC TESTS (IF SCHEDULED)
- PHYSIOTHERAPY SESSIONS (IF SCHEDULED)
- CONFIRMING DAILY MENU AND CHOOSING NEXT DAY'S MENU
- PREPARING THE ENVIRONMENT FOR LUNCH (SETTING UP THE TABLE AND POSITIONING BEDBOUND PATIENTS)

12:00 – 1:00 p.m. | Lunch service and Clearing dishes and repositioning bedbound patients

2:00 – 3:00 p.m. | Afternoon rest

3:00 – 4:00 p.m. | Hygiene, Sanification and Checking

- CHECKING VITAL SIGNS AND ADMINISTERING THERAPY
- BED-MAKING (IF NEEDED)
- ROOM AND RESTROOM CLEANING

4:00 – 4:30 p.m. | Tea Time

5:00 – 6:00 p.m. | Visiting hours for family and friends

4:30 – 6:30 p.m. | Physiotherapy sessions (if scheduled) - Diagnostic activities (if scheduled)

6:30 – 7:30 p.m. | Dinner Service

(table setup and repositioning bedbound patients, as needed)

9:30 – 10:00 p.m. | Checking vital signs and administering therapy + Rounds by the duty physician

10:00 p.m. – 6:30 a.m. | Rest Patients and Checking

Every two hours, nurses check patients' condition

Daily Inpatient Schedule

Open to the public: Monday to Sunday, 7:00 a.m. – 8:00 p.m. | Tel: +39 0962 96 01 01

WhatsApp Numbers: Clinic: +39 334 6412283 | Radiology: +39 393 9019146 | Radiotherapy: +39 327 0058717

CUP Admissions

Ground floor, first building: Monday to Sunday, 7:00 a.m. - 8:00 p.m. | Tel: +39 0962 96 01 01

7. Surgical Area

General and Oncological Surgery

Marrelli Hospital primarily focuses on the medical-surgical treatment of complex cancer conditions.

The surgical unit has 30 beds for general surgery inpatient admissions and 6 ENT beds. Located on the second floor of the main block, it comprises three divisions:

General Surgery, Abdominal Surgery, and Oncology.

These wards are interconnected so they can collaborate, offering patients cutting-edge, patient-centered care. Surgery is no longer viewed solely as a technical procedure; it is a key component of the overall disease trajectory.

In the past, a patient with a specific condition had to consult multiple doctors and move between various facilities to finally receive a diagnosis and treatment.

In contrast, Marrelli Hospital has established multidisciplinary diagnostic and treatment paths specialized in preventing, diagnosing, and treating complex diseases. Multidisciplinary meetings bring together specialists in medicine, surgery, oncology, radiotherapy, psycho-oncology, and others to create customized therapeutic plans for each clinical case.

Patients who entrust their healing path to the Marrelli Hospital surgical team will find a qualified structure capable of guaranteeing safety, staffed by trained professionals who will provide attentive, professional support throughout the treatment process.

Head and Neck Surgery and Otorhinolaryngology

Head and neck surgery focuses on the physiology and benign or malignant conditions of the mouth, pharynx, larynx, sinuses, salivary and thyroid glands, and related lymph nodes, in children and adults. This includes employing the most advanced, conservative, and minimally invasive surgical techniques while preserving high cure rates.

The field also includes diagnosing and treating hearing, vestibular, olfactory, gustatory, and cranial nerve disorders, as well as speech, language, and voice issues.

Some conditions within head and neck surgery but located in surrounding areas are addressed with a multidisciplinary, multi-specialty approach at MARRELLI HOSPITAL, involving other specialist teams before and after surgery, depending on the disease specifics, to determine the best treatment strategy.



Obesity Surgery

Marrelli Hospital's Obesity Center specializes in diagnosing and treating obesity and weight-related disorders.

Our goal is to improve patients' quality of life through personalized treatment paths, promoting long-term health and well-being. Obesity is a chronic disease marked by an increase in fat mass.

There are around 800 million people worldwide living with obesity; by 2035, the WHO estimates 1.9 billion people—one in four—will be obese. About 11.4% of Italy's population is considered obese.

Studies show that overweight and obesity significantly increase the risk of developing type 2 diabetes, cardiovascular disease, sleep and breathing disorders, and certain cancers, which are among the leading causes of death worldwide.

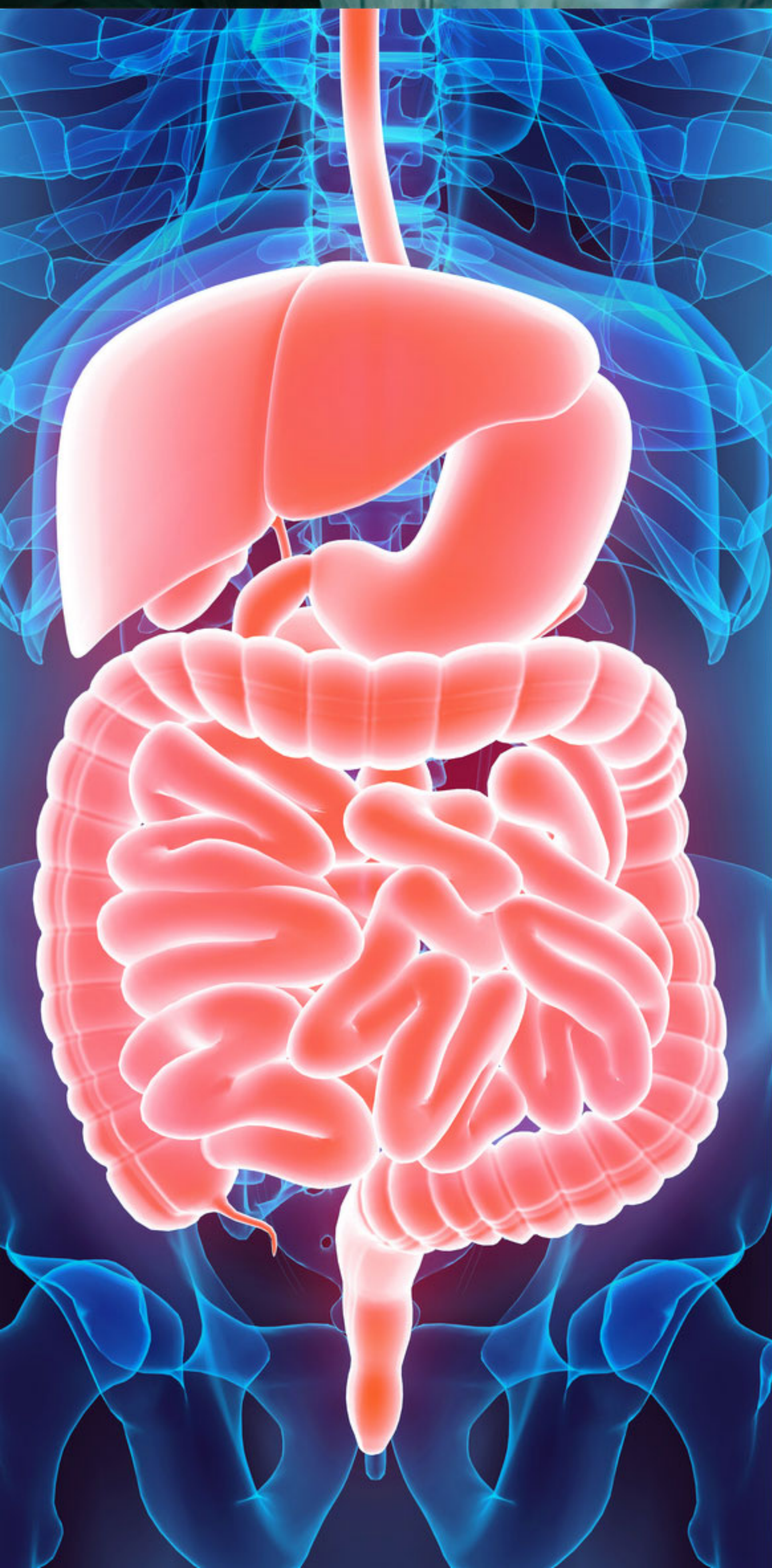
The Obesity Center employs different medical professionals who work together in a multidisciplinary manner to create a personalized, tailor-made treatment plan for each patient.



Laparoscopic General Surgery

Focuses on diagnosing and treating (through traditional or laparoscopic surgery, including biopsy for staging) neoplastic, functional, or inflammatory diseases in the digestive system—liver, bile ducts, and pancreas, as well as kidney/adrenal glands—within a multidisciplinary environment involving specialists pre- and post-surgery (medical oncology, diagnostic radiology, nuclear medicine, endoscopy, etc.). This ensures optimal therapeutic strategies for each patient. Specifically, hepatobiliary-pancreatic surgery addresses liver, biliary tract, and pancreatic diseases, thoroughly analyzing each case to propose the best solution.

In the presence of oncological disease involving the liver, pancreas, bile ducts, or gallbladder, personalized technical or technological solutions are determined to ensure long-term survival and quality of life.

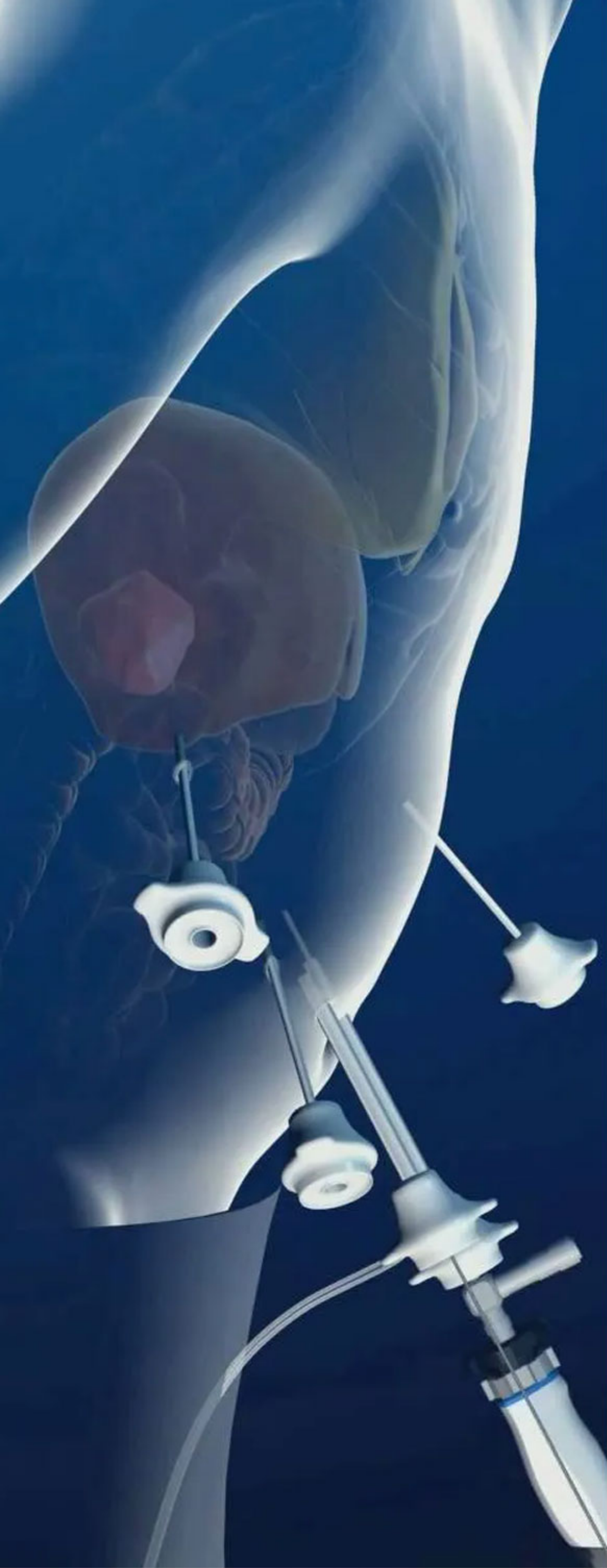


Abdominopelvic Surgery

Deals with the surgical treatment (either open or laparoscopic, including diagnostic and biopsy procedures) of diseases of the digestive tract (esophagus, stomach, small intestine, colon-rectum), liver, biliary tract, pancreas, kidneys, adrenal glands, and the genitourinary system, as well as other pelvic organs.

Often, surgery is combined with other therapies to ensure comprehensive, effective patient care. In oncology cases, developments in "integrated abdominal surgery" allow for early detection and more conservative, functional treatment of colorectal, gastric, enteric, and hepatobiliary tumors.

Technological innovation is a key strength, employing robotic procedures that minimize invasiveness while maximizing organ preservation—benefiting patients through reduced post-operative pain and quicker recovery times.



Minimally Invasive Surgery

Mainly dedicated to laparoscopic surgery, which uses a TV-based viewing system and small (up to 1 cm) skin incisions.

This approach replaces “hands inside the body” with optical and surgical instruments introduced through the incisions, with the surgeon operating while watching a monitor. The intraoperative image is larger and clearer than direct vision.

Today, most general surgeries can be performed laparoscopically—oncologically safe and radical, with fewer side effects.

Benefits include:

- Less post-operative pain
- Reduced hospital stay
- Faster return of intestinal function and oral feeding
- Quicker resumption of daily activities

Commonly treated conditions include upper GI tract diseases (esophageal, gastric tumors), colon tumors, colorectal tumors, and hepatobiliary-pancreatic tumors.



Plastic Reconstructive Surgery

Performed on any body part to correct or repair morphological-functional defects or tissue loss from congenital causes, trauma, tumors, or degenerative diseases, aimed at restoring normalcy or improving organ function—e.g., partial or total breast reconstruction after mastectomy, which accounts for a large part of these procedures.

The primary techniques used are skin grafts (tissue completely removed from the donor area for transplantation) and flaps (tissue moved to an adjacent receiving area while maintaining its own blood supply).

The abdomen is a common surgical site for issues such as “pendulous” or “protuberant” abdomens, either alone or in combination with hernias, in which case close cooperation with general surgeons becomes even more crucial.

Another key area is breast reconstruction after partial (quadrantectomy) or total removal (mastectomy) due to tumors, as losing a breast has a profound psychological impact. Reconstruction may happen concurrently with tumor removal (immediate reconstruction) or later (delayed reconstruction).

Reconstructive surgery can be essential to a patient’s overall care due to its positive psychological implications.



Melanomas and Musculoskeletal Sarcomas

Primarily concerned with researching and treating melanoma—a particularly aggressive skin cancer—other skin tumors, and soft-tissue sarcomas.

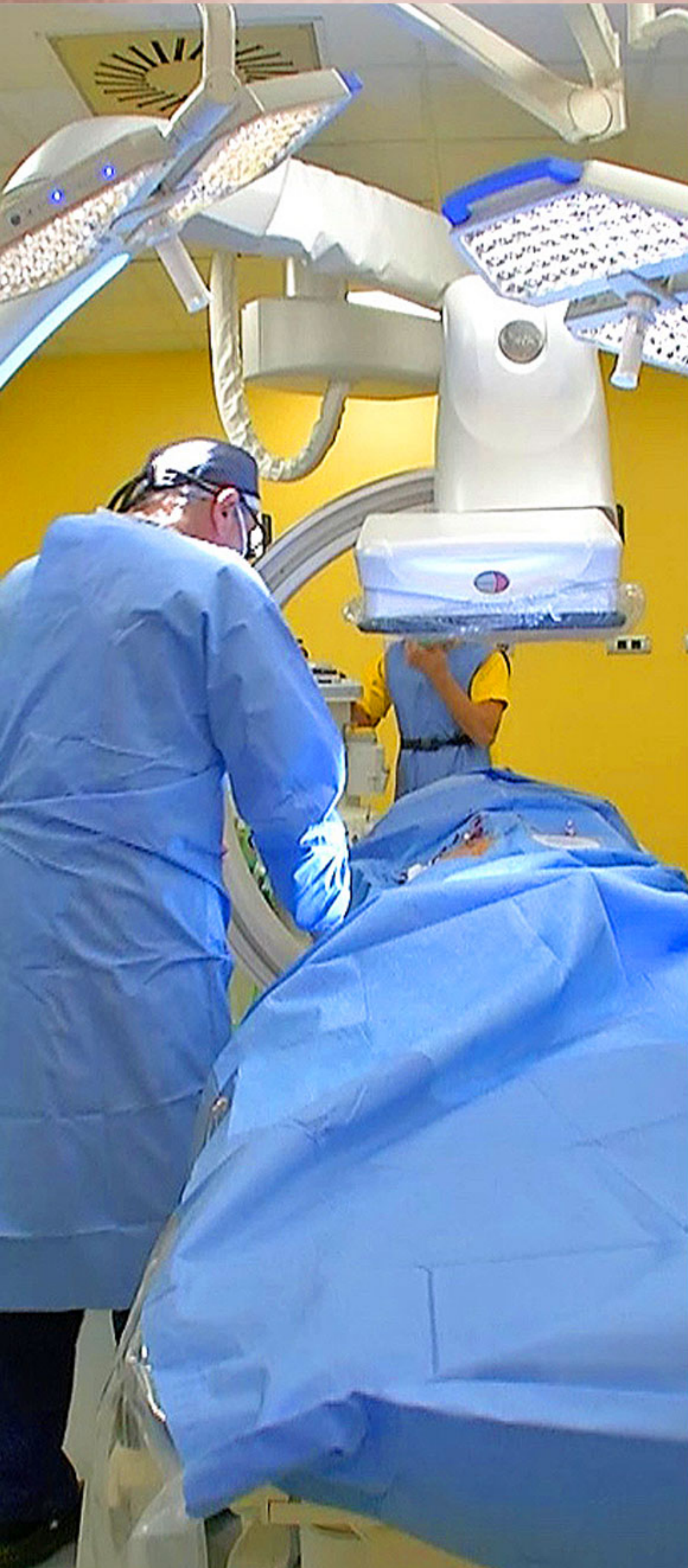
Patients are followed from diagnosis to surgery and further therapy if needed, employing cutting-edge instruments and medications.

Cutaneous melanoma originates from melanocytes in the epidermis. Under normal conditions, melanocytes can form nevi (moles), which may become malignant.

Soft-tissue sarcomas in adults develop when malignant cells form in the body's soft tissues (muscles, connective tissues, blood/lymphatic vessels, nerves, ligaments, adipose tissue). Biopsy is essential to determine sarcoma type and tissue of origin.

Patients with skin tumors often receive Day Surgery if margin freezing can be done, except when the anatomical location requires wide resection. Soft-tissue sarcomas can appear anywhere in the body, such as on the skin or arms/legs.

Treatment is always multidisciplinary, sometimes in collaboration with other units (e.g., general surgery for abdominal sarcomas).



Interventional Radiology

A modern branch of medicine using advanced technology to handle clinical problems or post-surgical complications minimally invasively, e.g., hemorrhage control and drainage of abscesses, that previously required invasive surgery. In oncology, interventional radiology is increasingly applied in loco-regional therapies as an alternative or adjunct to surgical or medical treatments.

The aim is to use ever less invasive, highly effective procedures with minimal patient discomfort.

Today, cancer patients often rely on a multidisciplinary team to tailor therapy to disease stages and the patient's clinical condition. Such collaboration increases long-term benefits.

Interventional Radiology Procedures:

- **Thermoablation with radiofrequency (RF) for lung tumors:** An electrode needle (with single or multiple prongs) is placed in the tumor under local anesthesia and light sedation. Heat from the RF current destroys tumor tissue. It is well tolerated, with minimal complications, performed in the CT suite, and patients can often go home the next day. RF ablation can be repeated if tumor regrowth or incomplete treatment occurs.
- **Percutaneous Biliary Drainage and Biliary Stenting:** For blockage of bile flow in the liver. A catheter is inserted through a skin incision in the flank or abdominal wall into the liver and biliary ducts. Bile is drained either externally into a bag or internally into the intestine if the catheter is advanced beyond the obstruction. In selected patients, the internal drainage tube may be replaced with a stent.



Drainage of Abdominal and Pelvic Abscesses:

Percutaneous drainage using a small catheter (about 40 cm long), inserted under ultrasound or CT guidance to remove purulent material from abscesses in the abdomen or pelvis.



Orthopedics and Traumatology

The Orthopedics Department at MARRELLI HOSPITAL treats the full range of orthopedic conditions (hand, elbow, shoulder, hip, lower limbs) with both minimally invasive and traditional approaches, including specialized pediatric orthopedics.

Specialty activities:

- Diagnosis and treatment of musculoskeletal diseases in children and adults
- Management of pediatric and adult trauma
- Orthopedic oncology

Outpatient Services:

- Follow-up and ongoing treatment
- Scoliosis prevention/treatment clinic
- Pediatric foot disorders clinic
- Neuro-orthopedics clinic

Conditions frequently treated:

- Orthopedic malformations
- Hand surgery
- Hip disorders (congenital dysplasia and dislocation, slipped capital femoral epiphysis, etc.)
- Foot disorders (clubfoot, metatarsus varus, flatfoot, hallux valgus in children)
- Spinal conditions (scoliosis, kyphosis)
- Correction of congenital or acquired limb deformities
- Surgical limb lengthening for discrepancies
- Bone/joint infections (arthritis, osteomyelitis, etc.)
- Minor deformities (bow-legged, knock-kneed, round back, scoliotic posture, etc.)
- Sports injuries
- Diagnostic and therapeutic arthroscopy of major joints
- Pediatric musculoskeletal ultrasound (monitoring of hip dysplasia)
- Medical/surgical treatment of musculoskeletal alterations in motor disabilities



Pediatric Orthopedics

The Pediatric Orthopedics and Traumatology Unit at MARRELLI HOSPITAL specializes in diagnosing and treating congenital/acquired orthopedic diseases, as well as pediatric musculoskeletal trauma, with respect to children's developmental stages and following international guidelines.

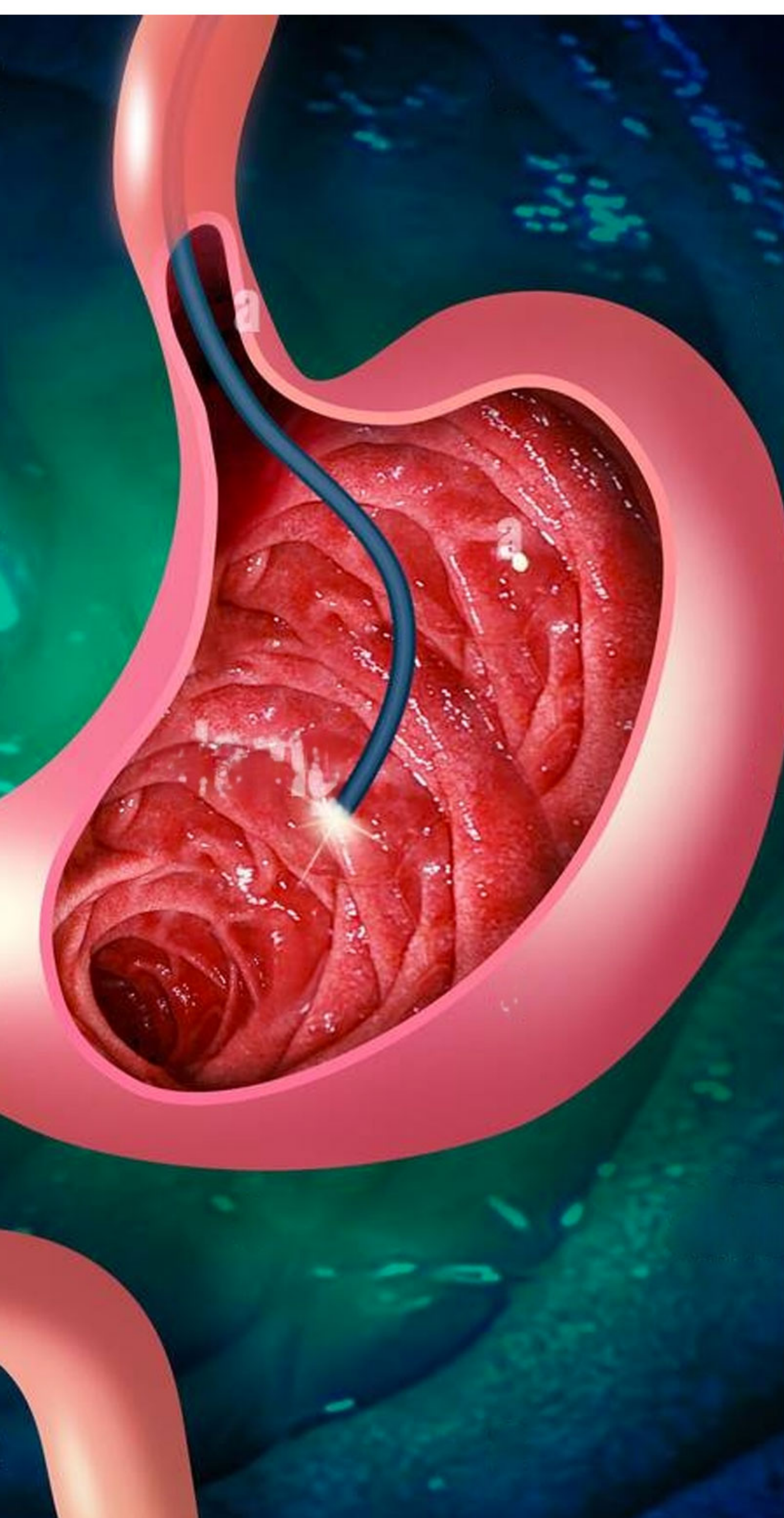
Common conditions managed include congenital hip dislocation, clubfoot, and upper/lower limb malformations. Typical acquired conditions include foot issues such as flatfoot, varus/valgus knee, osteochondroses (Perthes, slipped capital femoral epiphysis). We also have an active physical therapy department for rehabilitation of pediatric orthopedic conditions.

Conditions treated include:

- Flatfoot
- Pronated foot syndrome
- Calcaneal stop with a malleolar screw (exosenotarsal) or resorbable vs. titanium screw (endosenotarsal)
- Knee varus/valgus correction (Eight Plate or external fixator)
- Congenital hip dysplasia (conservative or surgical)
- Congenital pseudarthrosis (pathological nonunion of a bone)
- Arthrogryposis
- Congenital malformations
- Clubfoot
- Metatarsus varus
- Talipes valgus
- Sport injuries in children and adolescents (meniscus tears, ligaments, osteochondroses, fracture of intercondylar eminences)
- Reconstruction of the anterior cruciate ligament under arthroscopy
- Childhood trauma (0–14 years)



8. Clinical Area



Digestive Endoscopy

The Digestive Endoscopy Department at MARRELLI HOSPITAL is focused on:

- Early endoscopic detection of precancerous and cancerous lesions
- Curative endoscopic treatment for early stage neoplastic diseases
- Management of chronic diseases already diagnosed
- Functional diagnosis and gastroenterological endoscopic therapy for digestive diseases
- Coordinating integrated care pathways for patients with acute or chronic liver diseases and inflammatory bowel diseases

Additionally, it addresses benign GI pathologies, such as chronic inflammatory bowel disease, gastric and duodenal ulcers, *Helicobacter pylori* infections, and gastroesophageal reflux.

Services include diagnostic and therapeutic interventions for esophagus, stomach, small intestine, colon, pancreas, and bile duct disorders, focusing on tumor prevention and early detection.

Procedures involving the biliary tract and pancreas, or requiring radiology, are conducted in specialized, radiation-protected rooms with autonomous radiological equipment.

Endoscopy can also be used therapeutically (endoscopic surgery) for benign conditions and early/advanced-stage cancers, either independently or as an intraoperative support tool during surgery.



Gastroenterology

MARRELLI HOSPITAL's Gastroenterology Unit focuses on prevention, diagnosis, and medical/endoscopic treatment of digestive diseases (esophagus, stomach, small intestine, colon, anorectum, pancreas, bile ducts).

Outpatient activities include:

- First-level gastroenterology consultations (diagnosis, treatment plan)
- Second-level consultations for specific diseases:
 - Esophageal diseases (acid reflux, motility disorders)
 - Chronic inflammatory bowel disease (Crohn's, ulcerative colitis, indeterminate colitis) and celiac disease
 - Pancreatic conditions
 - Constipation and incontinence
 - Diagnostic endoscopy (esophagogastroduodenoscopy, sigmoidoscopy, colonoscopy, endoscopic ultrasound)
 - Gastrointestinal motility tests (stationary esophageal and anorectal manometry, 24-hour esophageal pH-metry and manometry, biofeedback)

Inpatient activities include:

- Elective admissions for acute digestive disorders
- Endoscopic procedures (dilations, esophageal stents, sclerotherapy, variceal banding, complex polypectomy, endoscopic retrograde cholangiopancreatography, papillotomy, biliary stenting, stone removal, enteral stenting, mucosectomy, endoscopic ultrasound).

Additionally, we are a regional reference center for "metabolic syndrome."



Cardiology

Performs non-invasive diagnostics and treatment of cardiovascular diseases for both inpatients and outpatients, offering:

Electrocardiograms | Adult and pediatric transthoracic echocardiography | Stress testing
Transesophageal echocardiography | Stress echocardiography (pharmacological)
Holter ECG monitoring | Ambulatory blood pressure monitoring
Outpatient consultations for initial visits or follow-up



Medical Oncology

Focused on specialized research, diagnosis, and surgical treatment of solid tumors. Improved understanding of the biological and clinical aspects of tumors, combined with state-of-the-art diagnostics and effective, targeted pharmacological treatments, have led to higher cure rates or better long-term disease control.



Psycho-Oncology

Deals specifically with the psychosocial impact of cancer, addressing the psychological and emotional issues experienced by the majority of patients.

Psycho-oncology is the convergence of psychology, centering on the patient's subjective experience, and oncology, centering on the objective clinical findings.

It is now viewed as fundamental to the comprehensive approach to cancer, offering patients and their families the necessary support in coping with the illness and its treatments.



9. Intensive care, Anesthesia, and Resuscitation

The Intensive Care Unit (ICU) treats patients requiring continuous monitoring and therapy because one or more vital functions are compromised or at risk of worsening.

Patients often need complex equipment and multiple drugs to support breathing, cardiac activity, or kidney function.

The ICU environment looks different from that of other hospital wards: space, furnishings, rules, and organization focus on caring for “critical” patients. This can initially cause anxiety or confusion.

Our ICU has 4 equipped beds, including 1 isolation bed for infectious patients. Each patient receives 24-hour monitoring, care, and supervision from medical, nursing, and support staff. The entire team handles every aspect of patient care, focusing not just on the disease but also on the person and their needs.

Particular attention is paid to pain control and relief of suffering, both from the disease itself and from life-saving invasive procedures.

For ICU patients, visiting hours must be arranged with the ward supervisor or the duty physician. National regulations permit only two visitors at a time, to prevent overcrowding and safeguard patients from infection.

Because of patient safety requirements (clinical risk management), certain hospital areas are restricted to authorized staff only.



10. Pianeta Donna

"Pianeta Donna" is a multipurpose center dedicated to women's health, encompassing gynecology/obstetrics, senology (breast diseases), plastic and reconstructive or aesthetic surgery, and more.

It is housed in MARRELLI HOSPITAL, with specially equipped medical rooms, state-of-the-art technology, and an outpatient surgical suite. "Pianeta Donna" offers a reference point for multiple dimensions of women's wellness, with specialists also in angiopathy, dietetics, dermatology, dentistry, psychology, orthopedics, urology, and rheumatology.

For more information:

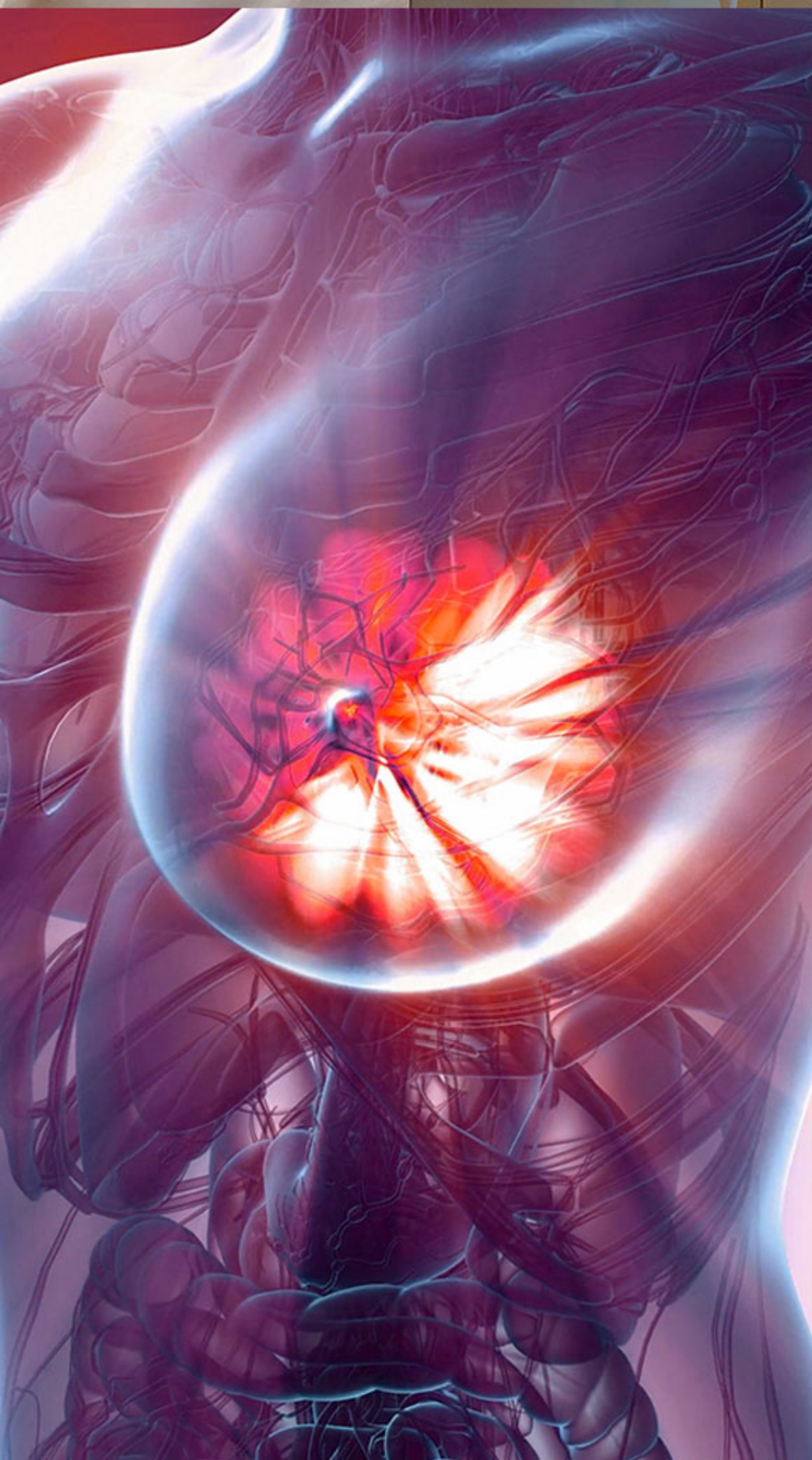
+39 0962 960101 or email pianetadonna@marrellihospital.it



Breast Radiology

Used for early detection and prevention of breast diseases, especially for diagnosing breast cancer at its earliest stages. The main diagnostic tools are:

- **Mammography**, utilizing tomosynthesis technology (an X-ray procedure with a dedicated device).
- **Ultrasound**, which uses sound waves and, combined with mammography, can diagnose many breast nodules.
- **Breast MRI**, a second-level exam used when other methods are inconclusive.



Brest Unit

European regulations require that, from January 1, 2016, breast cancer treatment in EU countries must be conducted in certified Breast Units (EUSOMA - European Society of Breast Cancer Specialists) meeting specific standards.

This aims to centralize the care of a high number of cases in specialized centers, consolidating experience among highly skilled professionals.

These multidisciplinary teams include all specialties involved in preventing, diagnosing, treating, and rehabilitating breast cancer, coordinated seamlessly.

In Italy, only a few certified centers meet these criteria; they operate voluntarily, without dedicated national healthcare funding or recognition.

11. Pain Therapy

MARRELLI HOSPITAL'S PAIN THERAPY AND PALLIATIVE CARE CENTER

It is important to note that while not all forms of pain can be completely cured, they can always be treated. Timely interventions are essential, addressing medical, psychological, and social needs; this multidisciplinary effort involves trained professionals and volunteers to meet each patient's and family's needs comprehensively.

MARRELLI HOSPITAL's Pain Therapy and Palliative Care Center offers a complete treatment pathway for individuals dealing with pain conditions: diagnosis, therapy, follow-up, and psychosocial rehabilitation. It is a referral center for acute and chronic pain, as well as palliative care for more complex needs or symptom exacerbations.

A multidisciplinary center near the operating block at MARRELLI HOSPITAL, it operates with organizational autonomy, providing inpatient services, Day Surgery, specialist outpatient services, minimally invasive procedures in the operating room, psychosocial rehabilitation, and optional home support. The center provides all necessary clinical and diagnostic activities to evaluate chronic pain, along with the full range of specialist treatments in pain management (algology).

It is crucial to remember that in Italy, Law No. 38/2010 obliges all healthcare professionals to measure and treat all forms of pain. Because pain has severe implications for patients, families, and society, and because there is widespread lack of information and difficulty accessing care, Law No. 38/2010 ensures patients have access to pain management and palliative care as part of essential healthcare. This protects human dignity, autonomy, equitable access to care, and quality of treatments respecting individual needs.

MAIN CONDITIONS TREATED

- Osteoarthritis
- Rheumatoid arthritis
- Primary low back pain
- Failed back surgery syndrome (pain following back surgery)
- Cancer-related pain
- Post-surgical pain
- Post-herpetic neuralgia
- Diabetic neuropathy
- Atypical facial pain
- Trigeminal neuralgia
- Headache
- Chronic refractory migraine
- Vascular pain
- Degenerative neurological diseases (CRPS I and II)
- Metabolic disorders
- Peripheral trophic lesions
- Ulcerous lesions
- All types of primary and secondary neuropathic pain
- Peripheral neuropathies
- Fibromyalgia
- Radiculopathies
- Pelvic pain

11. Check Up

MARRELLI HOSPITAL pays special attention to prevention for those wishing to assess their health status. Prevention has many benefits, not only reducing disease and its therapies but helping patients live better and longer.

MARRELLI HOSPITAL promotes a new, personalized approach, offering increasingly precise and minimally invasive diagnostic procedures, with specialized prevention paths:

- Personalized prevention programs for different age groups and genders, managed by our multidisciplinary team to detect diseases early.
- An innovative approach featuring cross-checks to identify diseases in early, asymptomatic stages and advanced protocols for therapeutic planning or lifestyle optimization.
- High-quality patient service in dedicated pathways and areas.

DEDICATED TEAMS AND INNOVATIVE FACILITIES

We invest in state-of-the-art technology for highly accurate diagnoses and safer patient experiences. The multidisciplinary approach applied to various pathologies comes together in this service, placing top-level specialists at the patient's disposal under the coordination of an internist.

ATTENTION TO TIME

Check-ups are scheduled to accommodate the patient's daily commitments; all tests and visits take place in a single morning and are pre-arranged via our CUP (Central Booking).

COMPREHENSIVE ASSISTANCE

We ensure thorough guidance to each patient, from a qualified staff providing expert care along the chosen check-up path.

HOSPITABLE RECEPTION

When entering the MARRELLI HOSPITAL CHECK-UP program, patients meet our healthcare staff, who collect their medical history, perform an initial examination, and schedule all tests and specialist visits for the same day.

WHO IT'S FOR

Check-ups are suited for both men and women and are recommended at least once a year, especially starting from around 35-40 years of age—when key pathologies often begin.

They are strongly advised if there is a family history of certain diseases or lifestyles involving stress or significant responsibilities.

CHECK-UP PROGRAMS

MARRELLI HOSPITAL offers customized programs to evaluate a patient's current health, including both diagnostic and instrumental examinations.

There are three main check-up programs tailored for:

- Men
- Women
- Children

We also offer numerous other prevention paths based on various conditions or patient-reported problems.

HOW THE CHECK-UP WORKS

At MARRELLI HOSPITAL, all visits and tests can be done in one morning. The process begins with an internal medicine examination, which includes an in-depth family/personal medical history, physical examination, and blood tests (lipid profile, liver function, kidney function, iron profile, viral hepatitis markers). This ensures a precise baseline clinical picture.

Diagnostic steps end with a final consultation: a detailed review between patient and MARRELLI HOSPITAL staff summarizing the findings, any conditions identified, therapeutic advice, potential further tests, and recommended follow-up intervals. The entire process is conducted by specialists with access to the hospital's advanced technology.

During the check-up, patients undergo:

- Specialist visits
- Imaging examinations
- Laboratory tests

From normal results (everyone's hope), the plan may simply include risk factor management (smoking, high cholesterol, overweight, sedentary lifestyle) or disease-specific therapy.

If more complex evaluations are needed (CT, MRI, scintigraphy, surgery), those can be arranged.

CONTACTS

e-Mail:

accettazione@marrellihospital.it

Phone:

0962/960101 (daily, 8:00 a.m. – 8:00 p.m).



13. RADIOLOGY

Marrelli Hospital has chosen top-of-the-line worldwide equipment for more accurate diagnostic imaging, employing innovative data management and sharing software. This combination ensures clinical efficacy while minimizing radiation doses for patients.

Integration of first-tier medical equipment and digital technology allows Marrelli Hospital to meet current and future healthcare demands. Like in other centers (e.g., NBA facilities, Juventus Stadium), we partner with GE Healthcare, Siemens Healthcare, LG, and Philips for an innovative healthcare model that provides the best for our patients.

“RADIOLOGY” by Marrelli Hospital, is an innovative facility dedicated to DIAGNOSTIC IMAGING. Equipped with the latest fully digital systems—delivering high-quality images with near-zero radiation—our specialized medical and technical staff provide expertise with strong patient-centered attention, continuous professional development, and administrative staff ready to guide you through the diagnostic process with precision and professionalism.

Our goal is to offer comprehensive preventive, diagnostic, and personalized therapeutic services, always placing patients first, with respect for their humanity and professional competence.

WE BELIEVE THE HEART OF HEALTHCARE IS SERVICE

At Marrelli Hospital Radiology, we take this service to heart, for the patient's well-being.



Discovery IGS 740 is a brand-new generation robotic angiograph featuring an exclusive laser-guided positioning system for wider patient care options. It also includes advanced 3D imaging techniques for in-room scanning, plus advanced clinical applications for abdominal, peripheral interventional radiology, neuroradiology, oncology, and hybrid procedures. The new design of the C-arm ensures a wide range of extreme projections useful for minimally invasive interventions, while covering large anatomical areas such as the liver or both lower

limbs simultaneously, minimizing the number of scans needed and reducing dose and contrast agent usage.

MARRELLI HOSPITAL IS THE FIRST AND ONLY FACILITY IN ITALY TO INSTALL THIS MODEL.

The Discovery IGS 740 is rail-free, allowing free movement around the patient table while offering a wide isocentric range and laser-precise patient positioning for highly accurate images. It features a large 41 x 41 cm digital detector, among the largest available for interventional imaging, ensuring fewer scans and lower dose exposure. The system uses advanced protocols for radiation optimization, with real-time adjustable parameters (kV, mA, exposure time, beam filtration) and neural network technology.

Additional integrated functionalities:

- **Light Plan for Liver:** Enables hepatic embolization planning, highlighting vessels from catheter tip to a hypervascular lesion.
- **Innova Vision:** Overlays 3D data from CT, MRI, or 3D rotational imaging on live fluoroscopy with a single click, enabling 3D roadmapping.
- **Innova TrackVision:** Facilitates real-time 3D image guidance for needle advancement in ablation procedures.
- **Innova Breeze:** A peripheral vascular imaging technique enabling real-time tracking of the contrast bolus, capturing both legs while analyzing smaller vessels with high-quality imaging.

INTERVENTIONAL ANGIOGRAPHY

Interventional angiography is a critical field in modern healthcare. After the diagnostic phase, many conditions can be managed endovascularly (e.g., stent placement, angioplasty), stabilizing or solving pathologies such as vascular stenosis, aneurysms, hemorrhage, or organ perfusion issues.

Applications include atherosclerosis treatments (angioplasty, stent), aneurysm correction via endografts, renal artery disease, bleeding control by embolization, chemoembolization for liver cancer (TACE), hemodialysis access management, sclerotherapy for varicocele, local fibrinolysis, TIPS creation, and fibroid embolization.



CONNEXITY RX Convenzionale

Connexity is a universal, remote-controlled system offering both radiography and fluoroscopy in the same unit.

With advanced features like automatic image stitching and digital subtraction, it meets a variety of clinical needs.

Its digital technology significantly reduces radiation doses—especially important in pediatric imaging—compared to traditional or CR-based (Computer Radiography) systems.



RISONANZA SIEMENS MAGNETOM SOLA

MAGNETOM Sola represents a leap in 1.5T MRI technology, providing accessible, high-level imaging for a wide range of patients and clinical scenarios.

Thanks to AI-based features, it adapts scanning parameters in real-time, reducing exam times by up to 50% while maintaining superior resolution.

KEY ADVANTAGES:

Speed: 50% faster than conventional MRI

Intelligence: AI-based optimization for detailed, high-resolution, 3D image reconstruction

Comfort: 70 cm bore alleviates claustrophobia; integrated music system helps patients relax



GE OPTIMA 450W GEM XP MRI

Our advanced GE Optima 450W GEM XP 1.5T MRI allows whole-body scanning with top clinical performance. With a redesigned hardware and intuitive interface, it broadens possibilities in neuro, body, breast, angio, musculoskeletal, cardiovascular applications, etc.

Silent Scan technology drastically reduces acoustic noise, improving patient comfort—especially for pediatric and elderly patients who may struggle to remain still. This upgrade reduces repeat exams, improves efficiency, and yields high diagnostic quality.

Main Advantages:

- 70 cm bore (20 cm wider than older MRIs)
- Table supports up to 220 kg, with no side bars (open bore)
- Acoustic Reduction Technology (ART) and Silent Scan
- High-speed imaging for large volumes in less time
- Integrated ambient features: chromotherapy, aromatherapy, and music



SENOGRAPHE ESSENTIAL CARE MAMMOGRAPHY

Mammography is crucial for early breast cancer detection—still the most common cancer in women.

Our facility has a 3D mammography system (tomosynthesis) by GE Healthcare, offering advanced diagnostics, including contrast-enhanced imaging and stereotactic core biopsy (Mammotome).

Advantages:

- 40% fewer false positives/negatives due to superior high-resolution, 3D imaging
- Reduced breast compression
- Lower radiation dose



CANON a450 & a550 ULTRASOUND

Aplio a-series ultrasounds (A450, A550) leverage Canon's advanced beam technology for high-definition images, improved penetration, and fewer artifacts.

Perfect for routine daily scanning, they offer advanced clinical applications in multiple specialties.



REVOLUTION EVO CT SCANNER

Revolution EVO is a next-generation CT for 128-slice reconstruction at every 360° rotation in axial or helical modes.

It manages diverse clinical scenarios—trauma, cardiology, obesity—ensuring high-quality imaging with reduced dose.

Key Features:

- Wide 70 cm gantry
- Smartbref device to guide patient breathing
- Faster, more accurate scans, reducing up to 80% radiation while maintaining image quality
- Shorter exam time, essential in pediatric cases or for severely ill patients
- Various software for vascular imaging (Angio-CT), interventional guidance (CT Biopsy), 3D reconstruction, virtual colonoscopy, cardiac CT, etc.

Types of CT services:

- Angio-CT for major vascular districts
- Cardio-CT
- Whole-body CT, with or without contrast
- Uro-CT
- Entero-CT
- HRCT for lungs
- Brain CT
- Facial bones CT
- And much more...

RADIOLOGY & NUCLEAR MEDICINE SERVICES

Including:

- Linear accelerator VERSA HD (all tumor types, including brain metastases)
- Comprehensive Angio-CT imaging for all major arterial systems
- Virtual colonoscopy (CT colon)
- Cardio CT with contrast
- Total body CT scanning
- MRI with or without contrast: Brain, Neck, Spine, Musculoskeletal, Abdomen (upper, lower), Angio-RM, Spectroscopy, etc.



14. RADIOTHERAPY

MARRELLI HOSPITAL's Radiotherapy Center is accredited by the SSN, offering state-of-the-art radiotherapy treatments (IMRT, VMAT, IGRT, Adaptive RT, SRS, SBRT) using one of the most advanced linear accelerators, the Elekta Versa HD with MLC Agility. This equipment delivers high doses quickly, minimizing side effects, to treat primary, secondary (metastatic), or recurrent cancers—often a valid alternative to surgery.

ADVANCED RADIOTHERAPY

Our advanced technology includes two Elekta Versa HD LINACs delivering photon and electron beams at various energies. The "Agility" multi-leaf collimator precisely shapes the beam, protecting healthy tissue around the tumor. Both accelerators are "twins," identically configured and calibrated, ensuring identical treatment quality and guaranteeing uninterrupted therapies.

They also incorporate in-room imaging capabilities (Portal Imaging, Cone Beam CT) for accurate patient alignment before and during treatment. For stereotactic treatments, we use Brainlab ExacTrac Dynamic v2.0, featuring an additional workflow to handle deep inspiration breath-hold (DIBH), reducing cardiac dose during breast radiation. We also have the C-Rad Catalyst gating system, which uses lasers to track respiratory motion in thoracic/abdominal tumors, enabling irradiation only during predefined breathing phases (SIGRT—Surface Image Guided Radiation Therapy).



COLLABORATIONS

Each patient is managed by a multidisciplinary team including a radiation oncologist, neurosurgeon, medical oncologist, surgeon, pathologist, medical physicist, radiologist, nurses, radiation technologists, nutritionists, and psychologists.

The Radiotherapy Center has established prominent partnerships with major national centers (e.g., San Pietro FBF, Policlinico Gemelli), reversing the flow of patients so that specialized professionals now come to Calabria.



ELEKTA VERSA HD

Versa HD is Elekta's next-generation radiotherapy system.

Its flexible solution caters to simpler therapies and highly precise, advanced treatments:

Hi Dose Rate delivery:

Allows standard or high-dose treatments with shorter delivery times, improved beam quality, and reduced scatter.

High-Resolution Beam Shaping:

Achieved via the integrated MLC for advanced or standard techniques, including stereotactic.

Imaging (IGRT):

2D, 3D, or 4D images for real-time verification, maximizing effectiveness and minimizing unnecessary exposure.

Patient Positioning

6D or immobilization devices (table, cushions, optical tracking) for reproducible setups. Essential for IGRT, Adaptive RT, and stereotactic treatments.

Organ Motion Compensation

4D imaging to manage respiratory or prostate motion, adjusting therapy accordingly.

Dynamic/Modulated Techniques:

3D CRT, IMRT, static or dynamic arcs, VMAT, and stereotactic treatments.



15. Research Activities

MARRELLI HOSPITAL invests considerable economic and professional resources in clinical research—testing new approaches directly benefiting cancer patients—and basic research—laboratory studies on tumor pathology to develop new diagnostic/therapeutic possibilities.

Our research is conducted at the Tecnologica Research Institute, an independent facility with advanced, innovative technology, in collaboration with prestigious international universities (Nottingham, “Marie Curie” in Paris) and renowned Italian institutions (La Sapienza in Rome, University of Bari).

Clinical Research

Predominantly through clinical trials involving consenting patients to test new therapies or new uses of established therapies. Such trials are a major driver of knowledge and progress in combating numerous diseases.

Today’s effective treatments stem from lengthy studies governed by protocols specifying patient eligibility, timelines, exams, and care details. Patient enrollment involves screening to ensure compliance with the protocol’s standards, preventing discrimination and guaranteeing consistent results.

Basic Research

Carried out mostly in the Tecnologica Research Institute labs, addressing multiple aspects of cancer diagnosis and treatment.

Area “P.R.I.M.A.” (Prevention, Research Innovation, Monitoring, and Therapeutic Approach)

Tumor prevention is a novel area of clinical oncology focused on preventing disease onset. At Tecnologica Research labs, patients can undergo genetic and molecular tests to identify predispositions to specific tumors, aggressiveness levels, or guide the clinician toward the most effective therapy.

Area “M.H.E.DI.CY.NE” (Microscopy, Histological Early Diagnosis, Cytology, and New Technologies)

At Tecnologica Research labs, advanced histological and cytological analyses are performed, along with genetic profiling and detailed structural analysis using devices like a cutting-edge confocal laser scanning microscope. Tecnologica Research Institute holds ISO 9001:2008 certification by Sincert-DNV, including an area with high-level biosafety standards operating under GLP (Good Laboratory Practice), a key criterion for accreditation by the Italian Medicines Agency (AIFA).

The labs participate in European and international research projects, serve as venues for academic and professional training, and employ highly qualified personnel with specialized expertise.

16. The Quality System

At MARRELLI HOSPITAL, we place patients at the core of our mission, regarding quality as a fundamental aspect of service.

We demonstrate our commitment to improving processes influencing service quality by seeking the highest levels of user satisfaction. For this reason, MARRELLI HOSPITAL holds ISO 9001 certification for its Quality System, supporting continual improvement.

We achieve this by:

- Implementing operational and managerial procedures, regularly verifying adherence, and promptly proposing corrective, preventive, and improvement actions.
- Evaluating whether goals are met.
- Ensuring the availability of planned structural, technological, and professional resources to meet the needs/expectations of our users.

Our quality policy, in line with our fundamental principles, will continue to:

- Ensure system effectiveness
- Invest in technological resources
- Prioritize user/patient care
- Guarantee access to treatment
- Facilitate communication
- Foster patient safety and clinical risk management
- Value and motivate staff through proper training

Training programs not only enhance skills but also make staff aware of their role in achieving objectives and continuous improvement. The hospital will assess patient and staff satisfaction via questionnaires (link in file).

Results will be analyzed at least annually, and a report will be presented to the Medical Directorate, Administration, and relevant representatives.

Periodic internal audits verify whether our operations and outcomes align with the plans, procedures, and instructions of the Quality System and our organizational goals. The Administration and Medical Directorate are kept informed, enabling immediate corrective action for any issues.

17. Useful Information

Main Switchboard:

Monday to Sunday, 7:00 a.m. – 8:00 p.m. | Tel. 0962 96 01 01

- **Whatsapp Clinic** +39 334 64 12 283
- **Whatsapp Radiology** +39 393 90 19 146
- **Whatsapp Radiotherapy** +39 327 00 58 717

URP (Public Relations Office)

The URP at MARRELLI HOSPITAL provides information about available services and listens to patient concerns, suggestions, and complaints to improve. Through complaints, patients inform the administration of:

- Service disruptions
- Issues in service delivery
- Access problems
- Violations of patient rights
- Satisfaction or suggestions for improvement

Complaints may be submitted to URP:

- In person (the URP officer fills out a special form)
- By letter, fax, or the specific form
- By phone at +39 0962/960101
- Via email at urp@marrellihospital.it

If the patient refuses to provide personal details, the complaint will not be registered or handled. The URP logs complaints in a register, taking direct action for minor issues and ensuring a written response within 20 days from receiving the complaint.

Complaints are monitored annually and summarized in a report to senior management, ward managers, and user representatives. The analysis of complaints and subsequent improvements are discussed in the Quality System's review to develop improvement plans.

Complaints

Potential complaints can be directed to the Customer Satisfaction Manager or the Medical Directorate, who will endeavor to resolve the issue before formal conciliation procedures mandated by Legislative Decree 4/3/2010 No. 28 become necessary.

CUP (Centro Unico Prenotazioni)

Monday to Sunday, 7:00 a.m. – 8:00 p.m. | Tel. 0962 96 01 01 | Whatsapp Clinic +39 334 64 12 283

E MAIL: cup@marrellihospital.it



Visiting Hours

Visits from relatives and friends are encouraged but must not interfere with medical activities or disturb other patients. Please respect posted schedules. Visits are from 5:00 p.m. to 6:00 p.m. daily. Entry to the ward is prohibited during medical rounds or other healthcare services.

Only one visitor is allowed at a time per patient bed, to avoid infection risks and ensure comfort for other patients in shared rooms. Limit the number of visitors when possible. A family member may stay beyond these hours only with permission from the ward director and medical director. We request respecting nighttime and daytime rest periods, avoiding noise or disturbance.

CONSULTATIONS WITH DOCTORS

Doctors are available to speak with relatives during their shifts, according to ward schedules.

IDENTIFYING MARRELLI HOSPITAL STAFF

All staff wear different uniforms and an ID badge with a photo, name, and title to facilitate quick identification.



18. How to Reach us

By Car

From the A3 Motorway heading south, exit at Cosenza and proceed along State Road 107 "Silana Crotonese" (E846) to Crotona. From the A3 heading north, exit at Lamezia-Catanzaro and then take State Road 106 "Crotona-Taranto" (E90). Signage will guide you from the entrance to Crotona to MARRELLI HOSPITAL.

GPS Coordinates: LAT. 39°4'7.348"N – LONG. 17°6'31.756"E

By Bus: Regular bus lines run daily to Crotona from major cities.

By Plane: Airports in Crotona, Lamezia Terme, and Reggio Calabria offer daily flights to many national destinations:

- "PITAGORA" AIRPORT, CROTONA
- INTERNATIONAL AIRPORT, LAMEZIA TERME
- REGGIO CALABRIA AIRPORT

By Train: Trains to Crotona depart from main Italian cities:

- TRENITALIA



19. Marrelli Home

Marrelli Home is a guesthouse created to support families and patients visiting hospitals and healthcare facilities within the Marrelli Health Group. Designed to be inviting and comfortable, it helps guests feel at home.

As a Deluxe guesthouse, Marrelli Home is ideal for a relaxing stay away from urban hustle. Equipped with every comfort, it's adjacent to the Calabrodental Dental Clinic and 10 minutes from Marrelli Hospital, the city center, and Crotona's seafront beach.

Inside are 9 double bedrooms and 2 suites, each with a private bathroom featuring a shower or bathtub.

The Balinese-style furnishings are refined, offering spacious, bright interiors for a pleasant stay.

Contact

Via Enrico Fermi, 11 | Crotona 88900
Tel.+39 327 09 67 922
info@marrellihome.it



20. Conventions and Insurance

MARRELLI HOSPITAL has partnerships with the leading insurance companies offering policies or integrated plans that reimburse healthcare services. We provide full coverage and support in managing insurance paperwork.

To use your insurance, upon admission please provide:

- Personal ID
- Tax/health insurance card
- Insurance card or policy number
- Medical certification stating the diagnosis for admission

Payment details depend on the insurance plan type:

Direct billing:

no upfront costs for the patient

Direct billing with deductible:

the patient pays the deductible stated by the insurance

Indirect billing:

the patient pays upfront, then is reimbursed by the insurance company

For more details or to arrange agreements between your company and MARRELLI HOSPITAL, email cup@marrellihospital.it.

Note: Conventions and insurance agreements are continually updated. We recommend verifying coverage directly with your insurance company or membership organization.





21. Other Services

Bar/Cafeteria



Located on the ground floor, near the reception desk, open Monday to Friday from 7:00 a.m. to 7:00 p.m., and Saturday from 7:00 a.m. to 2:00 p.m.

Closed Sundays. It provides quick snacks, fresh pastries, sweet or savory treats, sandwiches, salads, and hot dishes prepared by our in-house chefs.

Customized Menu and Dietary Services



Proper nutrition is crucial in patient care. Our menus are developed by dietitians, adjusted for specific patient needs.

Patients with dietary restrictions or intolerances have personalized options prescribed by our clinical nutrition specialist and prepared by our chefs.

Patients without dietary limits can choose between two menus. Options are available for religious or lifestyle preferences. Families can dine with a patient only in special cases, subject to Medical Directorate approval.

Breakfast is served between 7:00 a.m. and 7:30 a.m., lunch between 12:00 p.m. and 1:00 p.m., tea time at 4:00 p.m., and dinner between 6:30 p.m. and 7:30 p.m. Quiet time is from 10:00 p.m. to 7:00 a.m.



Barber/Hairdresser

Available on request via the head nurse. Provided in-room on weekdays by qualified personnel. The cost is borne by the patient.



Sound System

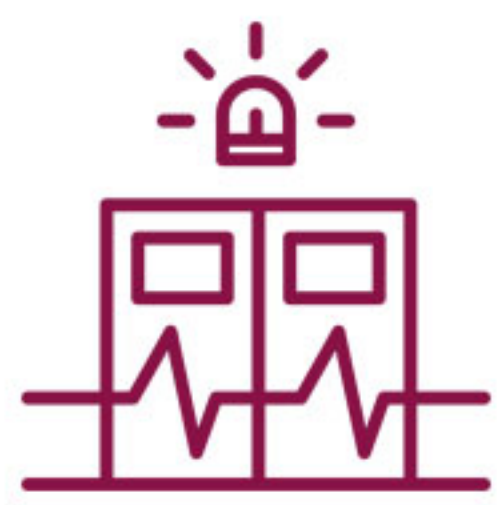
All rooms have a built-in audio system.



Ristorazione

MARRELLI HOSPITAL runs its own kitchen located on the ground floor. Products are carefully selected for quality and freshness. Specialist diets are prescribed by the Clinical Nutrition team and prepared accordingly.

Patients with no dietary restrictions can choose from two menus, including religious or lifestyle-based alternatives.



Emergency Plan

All hospital facilities adhere to a comprehensive emergency plan meeting D. Lgs. 81/08, D. Lgs. 106/09, and Ministerial Decree of September 18, 2002 (fire prevention) standards.

Its main objective is to protect people, particularly those who may be non-self-sufficient, and minimize property damage. The hospital's Prevention and Protection Service, with designated responsible staff, ensures compliance.



Internet Wi-Fi

Wi-Fi coverage is available in the bar/restaurant area and inpatient wards. An internet point is also located in the waiting lounge on the ground floor.

The user agrees to comply with legislation, including copyright and privacy laws; login credentials must be stored securely.



Television

Each bed has a TV with remote control and cordless headphones, tuned to national channels. Instructions are provided at admission.



Laundry

Patients wishing to have personal clothing washed can request this service by filling in the relevant form and giving the garments in a special bag to the support staff. This service is provided by an external company at the patient's expense.



Room Cleaning

Patient rooms are thoroughly cleaned once a day and tidied up again in the afternoon. Linens are changed at least once a day or as needed.



Duty Physician

A duty physician is on-site 24/7 to provide continuous care for inpatients. Their role includes:

- Assistance for inpatients if their primary physician is unavailable
- Handling urgent admissions
- Evening rounds for patients who had surgery during the day
- Helping visitors if needed

After each check-up, the duty physician updates the primary physician. If necessary, they consult with any specialists under the supervision of the Medical Directorate.



Accompanying Person Accommodation

Nearly all hospital rooms come with a second bed, sofa bed, or recliner chair for an accompanying person. Please mention such needs during admission (subject to availability). Any additional charges for a companion's overnight stay will be settled separately. Admission staff can provide details.



REMINDERS

Smoking is prohibited throughout the building.



No animals are allowed inside.



For meal/dietary requests, consult the appropriate staff member.



Cell phone usage should be limited.



No clothes or linens may be hung out windows/balconies.



Avoid wearing pajamas/robes in the lobby.



WE KINDLY REQUEST:

Inform the head nurse before leaving the ward.



Take care of your valuables, cash, and personal documents.



Complete our "service quality" questionnaire and return it to the head nurse before discharge.



promoted by
MARRELLIHEALTH

Direzione Sanitaria

Dott. Massimiliano Amantea

CASA DI CURA | Via Gioacchino da Fiore, 5 | 88900 CROTONE
tel. (+39) 0962 96 01 01 | WHATSAPP: +39 334 64 12 283
info@marrellihospital.it | cup@marrellihospital.it

RADIOLOGY | Via dei Greci (Trav. Via G. da Fiore) | 88900 CROTONE
Tel. (+39) 0962 96 01 01 | WHATSAPP: +39 393 90 19 146
accettazione.radiology@marrellihospital.it

RADIOTHERAPY | Via dei Greci (Trav. Via G. da Fiore) | 88900 CROTONE
tel. (+39) 0962 96 01 01 | WHATSAPP: +39 327 00 78 517
accettazione.radiotherapy@marrellihospital.it

www.marrellihospital.it